

# Alton Infant School

*Sowing the seeds of learning*

Normandy Street, Alton, GU34 1DH Tel:01420 83857

www.alton-inf.hants.sch.uk

email: adminoffice@alton-inf.hants.sch.uk



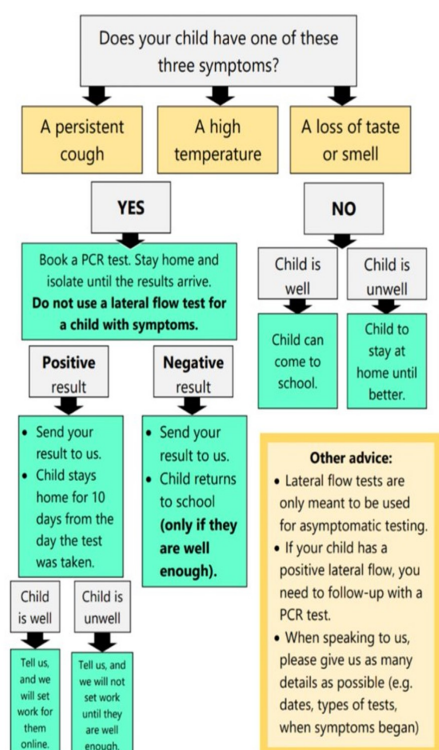
During the late Summer, the staff and I spent some quality time reflecting and thinking through all the positive work that we do here at Alton Infant School. We particularly reflected on all the good things that we aim to aspire to each day for our pupils and families. This then led to the creation of the school's new vision as written below. I am very pleased with our new vision as I believe that it captures the essence of Alton Infant School and everything that we aim to provide.

Finally, I hope you have restful and well-deserved half term break. Don't forget that the 1st of November is an INSET day and so we look forward to seeing you back in school on Tuesday 2nd of November.

## Our Vision.

*Alton Infant School is a Rights Respecting School and all are welcome, accepted and included. Through high levels of care and compassion, we aim to provide a rounded education within which children flourish and thrive academically, emotionally and socially. Our vision is for teaching and learning to be an enjoyable, engaging and memorable experience so that children become happy, confident and creative learners. We believe that each child is unique and we aspire to unlock each child's individual gifts and talents.*

Please follow this Covid flow chart should your child display any symptoms.



## Diary Dates

**25th - 29th October - Half Term Holiday.**

**Tuesday 2nd of November - Children return to school after half term.**

**Wednesday 3rd of November - Sports Activity Day for all year groups. Please can your child come to school wearing their PE kit.**

**Friday 5th of November—Flu immunisation for the children.**

**Friday 19th November - H S A Mufti Day - donate items for a Christmas hamper.**

**Thursday 16th December - Break up for the Christmas holidays.**

## INSET days for 2021/2022

**1st November 2021 17th December 2021**

**28th February 2022 8th April 2022**

**24th June 2022**

## Extra Bank Holiday!

## Warning!

We are hearing reports that some children are being exposed to inappropriate on-line material at home that is related to the Netflix series *Squid Game*. As I am sure you will agree, this material is highly inappropriate for young children.

Our understanding is that the material is coming through on various apps and games including Roblox and Tik Tok. Please be vigilant! Many thanks.

In lieu of the extra bank holiday to celebrate the Queen's Platinum Jubilee, Hampshire school's (including Alton Infant School) will be breaking up a day early for the Summer Holidays. Therefore, the last day of the Summer Term will be Thursday 21st July.



## Harvest Assembly.

Many thanks for your generous donations for our Harvest Festival. Please see below for a message from the Alton Food Bank:-

**Dear Alton Infant School pupils, parents and staff.**

**We are really grateful for the Harvest Festival collection that you donated to the foodbank this week. In total, an amazing 183.9 kg of food was donated! The food is now in our warehouse and ready to be distributed to families in need in the local area. At this time of year, the foodbank is at its busiest and the food donated now will ensure that we can meet the increased demand over the autumn and winter months. Thank you for thinking of the families in our community who really value the support of the foodbank.**



## Staff Governor's Corner - A message from Mrs. Plant.

---

Hello to all the lovely children, parents and staff of Alton Infant School.

We have finally made it to October half term. It has been an extremely busy half term with getting to know our new classes and getting back into school routines.

As a school we have been involving and communicating more with our local community. I have taken on the role of being involved with our local supermarkets.



I would like to say a big 'thank you' to our local Sainsbury's store who have provided us with fresh fruit and kebab sticks so that each child from the school was able to make their own fruit kebab with the help from the Sainsbury's colleagues. We look forward to seeing them again soon.

A huge thank you also for all the food that you donated to the Alton Food Bank as part of our Harvest celebration. Our local Waitrose provided us with many loaves of bread for the children to share and to discuss which ingredients we would harvest to make a loaf of bread.

Thank you again for all your support. Have a relaxing break and make sure you all stay safe!

---

### Alton Community Cupboard.

Alton Community Cupboard, is a community project set up to reduce waste. A group of local volunteers collect surplus food (and other surplus goods) from supermarkets, allotments and peoples' fridges and make it available to anyone and everyone from the local area. The Community Cupboard is available to all – it's aim is purely to reduce waste and everyone can help with that. Always Free!



Alton Community Cupboard is located at 3 Westbrook Walk, by WH Smith.

For further information contact [altoncommunitycupboard@gmail.com](mailto:altoncommunitycupboard@gmail.com)

---

## Do you know someone whose child is starting school in September 2022?

*If so, please see below for the dates of our upcoming Open Evening and tours of the school.*

**Open Evening** for parents to find out more about our wonderful school -  
Wednesday 17th November at 7.30pm.

### Tours of the school.

Monday 8th November 2021 – 9.30am

Tuesday 16th November 2021 – 9.30am

Monday 22nd November 2021 – 9.30am

Monday 29th November 2021 – 9.30am



## News from our local nurseries.

**Job opportunity - Bushy Leaze Children and Families Centre** are advertising for an Early Years Practitioner (Level 3 Minimum). Contact 01420 87675 or [adminoffice@bushyleaze.hants.sch.uk](mailto:adminoffice@bushyleaze.hants.sch.uk) for further information.

**Happy Talk Nursery** in Anstey Park, Alton, have ten full-time/part-time places for children aged 2 - 4 years old. Please contact the nursery on 01420 544523 for further information.