



Normandy Street, Alton
Hampshire GU341DH
Tel: 01420 83857



e-mail: adminoffice@alton-inf.hants.sch.uk
website: www.alton-inf.hants.sch.

Headteacher: Mrs Jayne Broach



Doors open 8.40
Registration is 8.55

October 2020

Dear Parents/Carers

Thank you again everyone, we are so proud of the way the children have adapted to the changes with entrances/collection points, separated playgrounds and toilets and year group assemblies (with humming and miming to our songs, instead of singing) – it's all pretty much embedded now. Hot school dinners are a great success, with a brilliant uptake. They look delicious too!



Group by Alton News

Alton News >

PUBLIC GROUP · 7.4K MEMBERS

Alton News FaceBook

Alton Infant School now have a page that we use to promote ourselves through Alton News. If you are a member of Alton News, why not follow our page for information posted.



Alton Infant School

@AltonInfantSchool

Calendar dates

INSET days for 2020

2nd Nov, 18th Dec, 12th & 22nd Feb, 25th June

9th Oct – School Photographer – note: this year we cannot offer the wider family option due to our current Covid restrictions – so individual and AIS siblings only.

Week 19th-23rd Oct – Parent Consultation phone calls

26th-30th Oct – HALF TERM

2nd Nov – INSET DAY

4th Dec – Flu immunisation

17th Dec – Last full day of term

18th Dec – INSET day school closure

4th Jan – First day of Spring Term

Reading at Home

Reading at home is so important to your child's development, both for reading and writing. It is good to see how many children read at least 4 times a week. Please remember to sign in their **Reading Diary**.



PE kit

Thank you so much to those who have provided your child with outside PE wear. As the weather turns colder, please help your child stay warm.





Well done to the Y2 children who are managing to complete the weekly Y2 maths homework set on Education City. Please support your child to complete this homework, as there were a few children missing last week. Thank you.

WANTED



Do you have any old Lego bricks we could use in school please for Play Therapy? We are asking for **regular bricks** and not sets that make specific objects/vehicles.

Thank you for any support with this request.



YR wellies

Please could YR parents provide wellies for their child to keep in school? There is no such thing as bad weather for little children, just bad clothing.

Much appreciated, thank you.



97% of families have now signed up to Class Dojo. It has been really exciting to see lovely messages and photos from so many families. They are being uploaded into each child's portfolio.

Keep up that means of communication and messages with your child's teacher **rather than emailing them.**

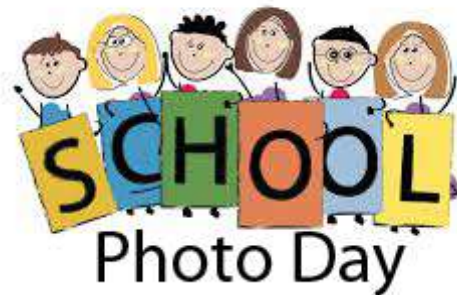
Well done.

Parent Consultation phone conferencing.

As we are unable to accommodate parents' evenings in school this year, myself and Mrs Hayes, Deputy Head, are asking parents to sign up at drop-off and collections times. Each phone consultation will last 10 minutes. This may prove tricky, but please try to understand that longer conversations will need an alternative phone call. We look forward to chatting with you during your allocated slot between Monday 19th-Thursday 22nd October. Each day this week we are signing up a different class. We will get around to you all by the end of the day Friday.



School Photographer - this FRIDAY!



Please find attached below a HCC check sheet of when to/not to send your child to school.

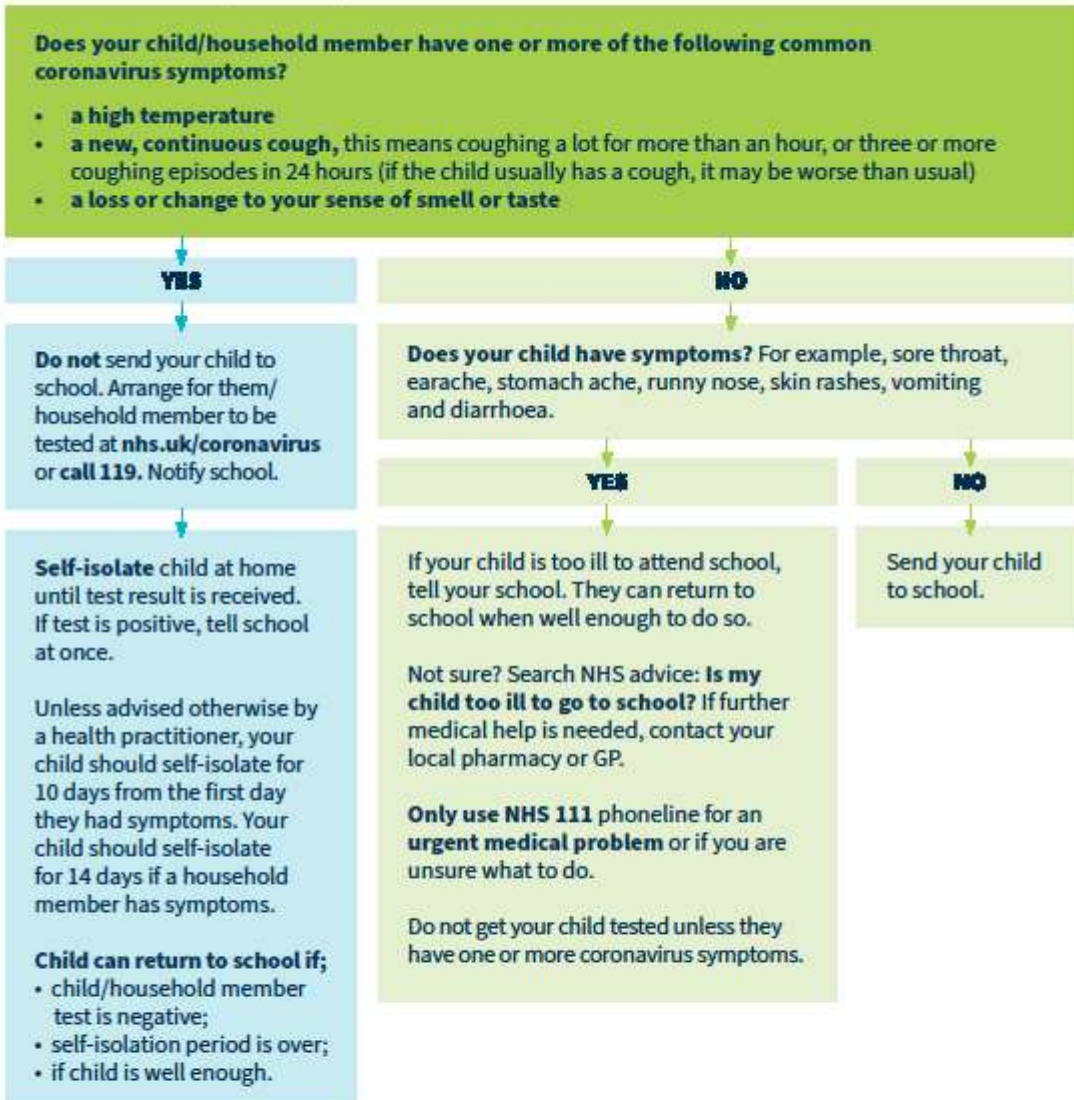
Thank you again for your support.

Yours sincerely

Mrs Jayne Broach
Headteacher

When to send your child to school

This flow chart may not cover all scenarios. Please refer to detailed guidance at nhs.uk/conditions/coronavirus



Further guidance and help

Search nhs.uk/coronavirus for guidance on what your test result means and on self-isolation.
Hampshire Helpline if you feel you need support to self-isolate: **0333 370 4000**