

Alton Infant School

Sowing the seeds of learning



Normandy Street, Alton, GU34 1DH Tel:01420 83857

www.alton-inf.hants.sch.uk

email: adminoffice@alton-inf.hants.sch.uk

I just want to take this opportunity to wish you all a very happy and peaceful Christmas. The children have had a very good term and it always amazes me how they change, grow-up and achieve over such a short period of time. It has been a very busy term and it has been a delight to see the children enjoying school and making such great progress.

I am sure that you will also join me in thanking the staff for all their hard work and dedication. They are an amazing team and so passionate about the education and well-being of your children.

As we move towards next term, the staff are busy planning lessons and learning activities so that the children continue to progress and attain into next year. We always aim to make lessons enjoyable and active so that our curriculum provides memorable experiences to help the children learn as fully as possible.



Christmas.



We hope that you all enjoyed our Christmas concerts and activities this year. I

think that you will all agree that the children performed very well and they certainly enjoyed entertaining you all. The children have also enjoyed eating Christmas dinner and joining in with different Christmas games and activities. We even had a visit from Santa!

Thank you also for your kind Christmas wishes, gifts and cards.

Don't forget that school starts back at the usual time on

Tuesday 2nd January!



Diary Dates

Friday 15th December - Break up for the Christmas Holidays.

Tuesday 2nd January 2024 - Children return to school after the Christmas Holiday.

Friday 9th February 2024 - Break up for February Half Term.

Tuesday 20th February 2024 - Children return to school after the February Half Term Holiday.

Thursday 28th March 2024 - Break up for Easter Holidays.

Monday 15th April 2024 - Children return to school after the Easter Holiday.

Thursday 23rd May 2024 - Break up for the May Half Term.

Monday 3rd June 2024 - Children return to school after the May Half Term Holiday.

Tuesday 23rd July 2024 - Break up for the Summer holiday.

INSET days for 2023/2024

Monday 19th February 2024

Friday 24th May 2024

Friday 28th June 2024

SAVE THE DATE!

Parenting workshop - 7th February - 6.30pm - 7.45pm.

We are delighted to let you know that Hampshire Primary Behaviour Support will be running a parenting workshop during the evening of Wednesday 7th February. The workshop will take place in the school hall. We are then hoping to run two further, follow-on workshops later in the year.

We all know that parenting can be very challenging at times and so this and subsequent workshops aim to provide support and advice around the themes of 'establishing clear and effective boundaries', 'who is control?' and 'finding the positive'. We will send out more details nearer the time.



If you, or someone you know, has a child starting at Alton Infant School in September 2024, applications must be made by 15th January 2024.

For more information go to www.hants.gov.uk/admissions

If you know someone who is interested in their child starting at Alton Infant School, please ask them to contact the school office to arrange a tour of the school.

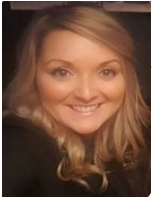


Starting school in September 2024
 If your child is 4 or will turn 4 before 1 September 2024, they can start school in September 2024.
 For more information go to www.hants.gov.uk/admissions
 Applications open for Hampshire residents on 8 November 2023

THE NATIONAL CLOSING DATE FOR APPLICATIONS IS MONDAY 15 JANUARY 2024

DON'T MISS IT!

Hampshire County Council hants.gov.uk



A message from our new Co-Chairs of Governors — Roisin Pope and Will Pointer.



It is hard to believe that we have already completed the first term of this school year, and what a busy term it has been!

In September, Stephanie Greenhalgh stood down as Chair of Governors. Steph has been a governor at AIS since 2018. Emily Plant (Beech Class) also came to the end of her term as staff governor. We are incredibly grateful to them both for their contributions and support. Following Steph's departure, we have been appointed Co-Chairs of Governors. As Co-Chairs, we are able to bring our different knowledge and skills to focus on different parts of the role, as well as share the workload. We have also welcomed Emma Jackson (Pine Class) as a new staff governor and Ryan Gordon as a new parent governor. We are delighted to have them as part of the team.

The Governors have all been able to spend time in school this term, reviewing the curriculum and joining lessons. It has been a delight to see the children enjoying school and making such great progress. During the Autumn Term the Governing Body has been focused on the School Development Plan as well as reviewing all the school policies and budget.

The Christmas Fayre has been also a highlight of the term. Thank you to those who attended; it was great to see so many of you there. Also, a huge thank you to the HSA (Home School Association) who organised it all and volunteer so much of their time. The HSA plays a pivotal role in our school community by actively supporting fundraising initiatives, which contribute significantly to the school's ability to provide extra learning resources and activities for the children.

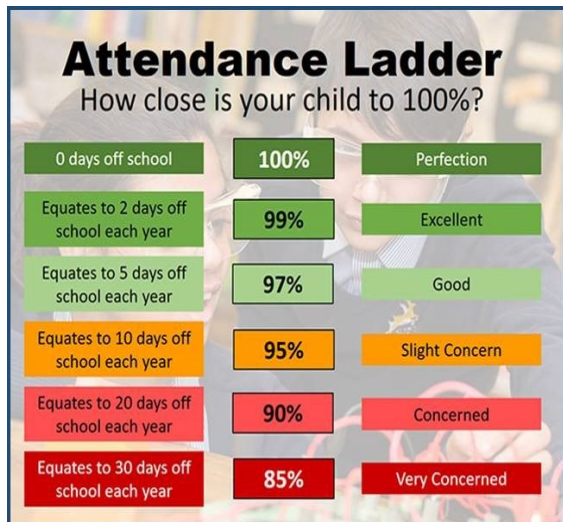
Our Parent Governors also had the privilege of attending this year's Christmas concerts. A huge 'well done' to all the children who all worked hard and excitedly played their parts in the different performances. They were all fantastic!

As we break up for Christmas, we want to thank the entire staff across the school for their commitment, hard work and dedication. We are incredibly fortunate to have an exceptional team who are passionate about the education and well-being of your children.

Finally, on behalf of the Governing Body, may we wish you all a "Happy Christmas and a Peaceful New Year"

The importance of good attendance at school.

Regular attenders make better social and academic progress. They find school routines, school work and friendships easier and learning more satisfying. Regular attenders are also more successful when transferring between schools and when entering employment. For children to take full advantage of the educational opportunities offered it is vital for pupils to be at school, on time, every day the school is open unless the reason for the absence is unavoidable (e.g. illness).



Furthermore, persistent lateness can have a detrimental effect as children miss vital learning and instruction at the beginning of the school day. Please remember, therefore, that the school day begins between 8.45am and 8.55am and that arrival after this time will be recorded as 'late'. In line with the school's attendance policy, arrival after registers have closed at 9.15am will result in an unauthorised absence which, over time, could result in a Penalty Notice (as can an unauthorised absence for 10 or more morning and/or afternoon sessions).

HOME SCHOOL ASSOCIATION

Thank you

For helping us raise an amazing

£909

This term!

We appreciate your continued support and look forward to bringing you more events in the Spring!

MERRY CHRISTMAS